

Malta

WITH PRIME LANGUAGE COURSES

Prime Language Courses





Malta

Welcome to Malta and welcome to an island, which is steeped in history, boasts a wonderful climate, a safe environment and friendly people.

The Maltese Islands are situated in the middle of the Mediterranean Sea, 93 Kilometers south of Sicily and 209 Kilometers north of Africa.

The island of Malta has an area of 250 square kilometers



Malta

The combined population of Malta and Gozo totals around 500,000 approx. Ethnically, the Maltese people are quite an extraordinary mixture. Throughout the islands' long history, the many races that have settled here have left their indelible marks, both culturally and physically.

English as a Foreign Language

English is the country's second language and it is spoken everywhere on the Island, so if you want to learn English, swim and have an unbelievable stay abroad,



Malta is the right place for you...

Prime Language Courses

Who is Prime Language Courses?

PLC is leader in affordable International Education.

For over 20 years, PLC has broken down barriers of geography, language and culture. PLC has over 200 overseas packages and 3 offices in 3 countries.



What does Prime Language Courses do?

PLC is different.

In addition to educational tours, PLC provides worldwide language learning, student exchange, cultural immersion and service tours, au pair services and college study programs, as well as a top-ranked international courses including unpaid work experiences.



Why Prime Language Courses?

01

Best Value

Quality packages at the guaranteed lowest prices.

Planning and organizing all tour logistics by travel experts

02

Most Educational

Fully accredited, just like our international partners

Full-time, trilingual staff at your disposal

03

Safety First

All-Inclusive Coverage Plan
Nothing is left to the case

Safety and peace of mind

Prime Courses has offices in 3 countries

Prime Courses has offices in 3 countries in Europe - Malta, "England" & Ireland.

24-hour emergency on-call service

24-hour emergency on-call service so you can reach Prime Language Courses day or night in the event of an emergency while studying with us! Emergencies only!

Full-time, Trilingual, professionally trained staff at your disposal.



Prime Courses' Peace of Mind Program

Prime Courses' Peace of Mind Program is on our side. Should social unrest or natural events make travelling to your destination unsafe, Prime Language Courses will work with our group to make alternative arrangements if needed.

Since 1998

Experience in providing students innovative products at affordable prices.

What We Offer in Brief

- Unpaid Work Experiences
- Fully Qualified and Experienced Teachers
- Ultra Modern School in Prime, Safe Locations
- Multi-Lingual Staff
- Purpose Built Classrooms
- Student Counseling Service
- Latest Audio Visual Teaching Tools
- One Stop Shop
- Cafeterias
- Cinema Room

- Unpaid Work Experiences
- Fully Qualified and Experienced Teachers
- Ultra Modern School in Prime, Safe Locations
- Multi-Lingual Staff
- Purpose Built Classrooms
- Student Counseling Service
- Latest Audio Visual Teaching Tools
- One Stop Shop
- Cafeterias
- Cinema Room

Educational objectives

To promote international understanding

and a respect for a variety of cultures



To clarify and deepen our understanding

of the international identity and its values and beliefs through intercultural experience



To expand our **knowledge** about culture and history and the basis for different values and beliefs



To develop the interpersonal skills

necessary to navigate a new environment with confidence, maturity and flexibility





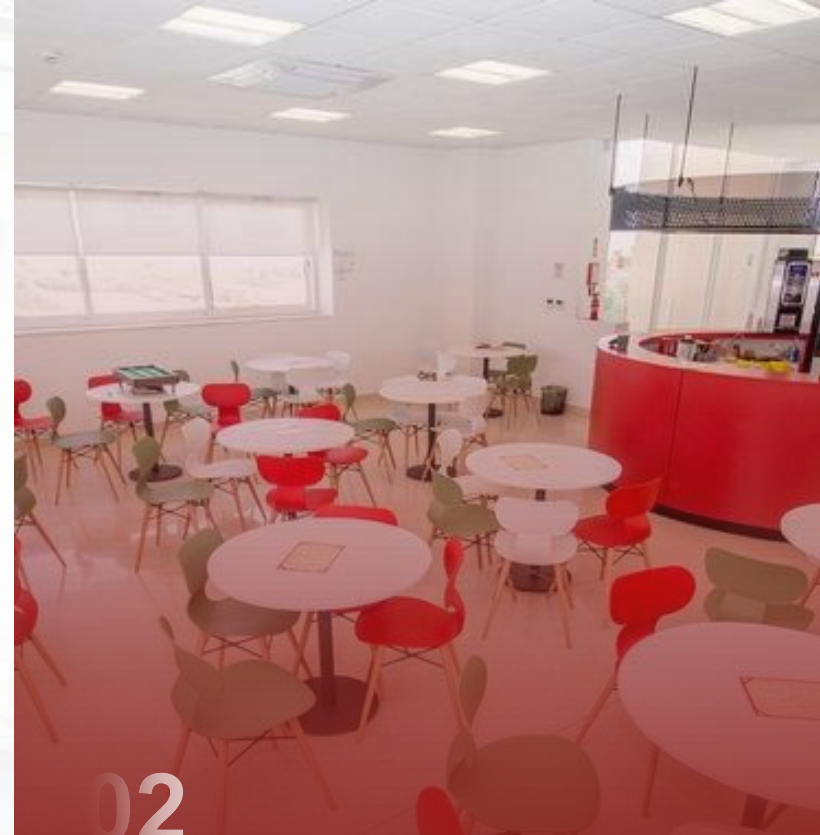
School

Atlas Language School Malta



01

Modern purpose built
school with cafeteria



02

10 large classrooms fully air-
conditioned with natural light

Facilities



School location: Pembroke



Pembroke

Pembroke is a town in the Northern Region of Malta, and it is considered to be the country's newest locality. To the east is Paceville, the nightlife district of Malta. The coastal town and tourist hub of St. Julian's lies to the southeast, and the residential area of Swieqi lies to the south.

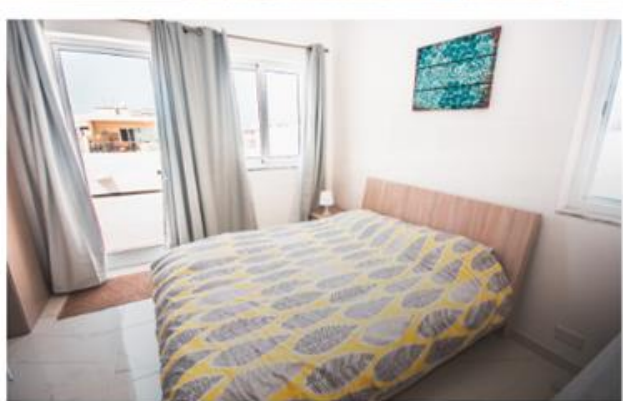
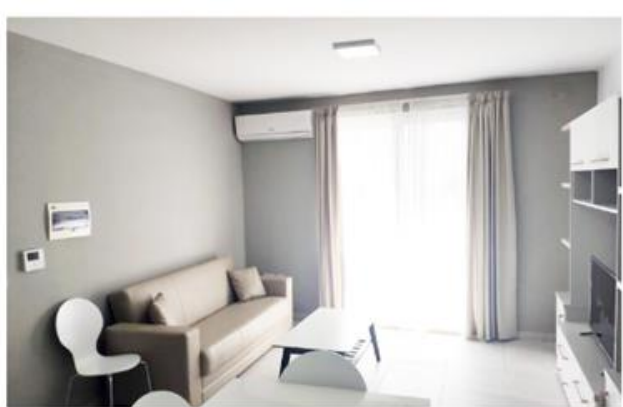


Swieqi

All school apartments are located in the area of Swieqi. The majority of the school accommodation is 15 max away on foot from the school, but once it is all full, other options can take up to 15/30 minutes away by public bus.

School accommodation





SUPERIOR APARTMENTS



Single and twin rooms



Shared kitchen /
dining area



Shared Bathroom
Facilities



Air conditioning
(cold/warm)



Linen and towels
provided



School Accommodation

- All rooms can be twin or triple, depending on the size.
- On request we can offer single rooms with or without a private bathroom. Single rooms or private bathrooms are subject to a supplement when available.
- Kitchen and living room are shared between the students
- Free WiFi is provided within the common parts
- Washing machine and air-conditioning is free.
Sensible usage is recommended to avoid wastage.
- 1 cleaning per week is supplied by the school. Students will have to maintain their rooms and common parts tidy and clean between cleanings.
- The apartments offer a self-catering service (no food is provided)
- Maintenance have to be reported at school at reception or on the emergency school number during weekends.

SKEDA TAL-ĠBIR TAL-ISKART
MILL-31 TA' OTTUBRU 2018

Waste collection schedule as from 31st October 2018

IT-TNEJN MONDAY 3pm
 • Skart Organiku Organic Waste
 • Skart Riċiklabli Recyclable Waste

IT-TLIETA TUESDAY 7pm
 • Skart Imballaġi Mixed Waste

L-ERBGHA WEDNESDAY 3pm
 • Skart Organiku Organic Waste

IL-HAMIS THURSDAY 3pm
 • Skart Imballaġi Mixed Waste

IL-ĠIMGHA FRIDAY 7pm
 • Skart Organiku Organic Waste
 • Skart Riċiklabli Recyclable Waste

IS-SIBT SATURDAY 1pm
 • Skart Imballaġi Mixed Waste

IL-HADD SUNDAY
 • Ma jidra jbir No Collection

MĠIEĠ - GLASS 9am
 And l-imbawli u l-imbawli Ġimgħa taraxxor
 3-ħgieg ind jipprova f'kull tal-karun jne l-imbawli tal-karun
 Every first and third Friday of the month
 Glass must be placed in cardboard boxes or paper bags.

Min ma jsegwi din l-iskeda jista' jiġi mħarrek
 Failure to follow this schedule may incur a fine

 Tassewili Local Council
 Tel: 2101 7600

Rubbish collection weekly plan

In Malta is in place a rigid separation rubbish collection schedule. Students are asked to practice the differentiation collection and place the rubbish downstairs ready for collection.

Standard General English Course

Lessons run from
Monday to Friday - 20
lessons per week

Each lessons last
50' each

No lessons on Public
Holidays (no refund of
the loss lessons will
be made)

Lessons' time table
09.00 - 12.50 (café
break between classes)

Lessons might run in
the afternoon when
morning classes are full

Each student will have to
do the English test on line
before arriving to Malta

First Monday at
school - Be at school
at around 8.15

Intensive courses
available - Subject to
a supplement

Course Options



General & Intensive English

English courses that will give you the language skills to live, work, study and travel in an English-speaking environment.



Exam Preparation

Improve your English and get prepared for one of the following exams: FCE, CAE, IELTS or TOEIC.



Academic Year Programmes

Studying for 25 weeks or more. Taking an extended period of time to live and study abroad is a life-changing experience and a fantastic way to improve your English.



Erasmus+ Teacher Training

Refresh your knowledge of contemporary English and learn different methodologies and teaching techniques.



Group & Mini Stay Programme

Tailor-made packages that are created to suit different types of English learners and specific needs of a group.



Atlas Junior Summer Programmes

Study English in Ireland, UK or Malta and learn about different culture in a fun and challenging environment.


Sample Timetable

	MONDAY	TUESDAY	WEDNESDAY	THURSDAY	FRIDAY
9.00 – 10.00	GE20 MORNING A: New Students: Placement Test & Induction Current Students: Review & Recycle (HWK 3 review + points arising from previous week's test & feedback)	GE20 MORNING A: Grammar, Vocabulary and Functional Languages	GE20 MORNING A: Grammar, Vocabulary and Functional Languages + Writing Skills HWK3 (Writing Skills) set for Friday	GE20 MORNING A: Grammar, Vocabulary and Functional Languages + HWK1 Correction	GE20 MORNING A: Grammar, Vocabulary and Functional Languages
10.40 – 11.10	BREAK	BREAK	BREAK	BREAK	BREAK
11.10 – 12.50	GE20 MORNING B: Introduce the week's objectives Grammar, Vocabulary and Functional Languages HWK1 (Grammar & Vocabulary) set for Tuesday	GE20 MORNING B: Vocabulary Building, Pronunciation and Speaking Skills Extension HWK2 (Grammar & Vocabulary) set for Wednesday	GE20 MORNING B: Vocabulary Building, Pronunciation and Speaking Skills Extension	GE20 MORNING B: Vocabulary Building, Pronunciation and Speaking Skills Extension HWK4 (Grammar & Vocabulary) set for Friday	GE20 MORNING B: Weekly review & Test
12.50 – 14.00	LUNCH	LUNCH	LUNCH	LUNCH	LUNCH
14.00 – 15.40	Current Students: GE20/GE26 Electives	Plus Courses (GE26)	GE20/GE26 Electives	Plus Courses (GE26)	GE20/GE26 Electives
15.40 – 16.30	New Students: Orientation tour	Study Club	Study Club	Study Club	
16.30 – 17.00					

Activities/Excursions

The school organizes daily activities, excursions and school parties to facilitate interaction between students of different nationalities.



A woman with brown hair tied back, wearing a yellow blazer over a white top, is smiling and looking down at a laptop. She is holding a pen in her right hand. The background is blurred, showing an indoor setting with plants and a patterned orange cushion.

Advantages of booking with Prime Language Courses

Students or companies will benefit of the following when partnering with us:

- **Territorial knowledge**
Prime has now acquired a consolidated knowledge of the territory and of the companies that partner with us
- Possibility of organizing other initiatives throughout the year, Prime is present on the island of Malta all year round for the past 16 years
- Prime partners with the best - **Mackenzie Presbyterian University**

Standard General English Course

Package prices: 2 & 4 weeks

Package price: 2 weeks - Euro 805

What included:

- *40 lessons over the period (GE 20)
- *Accommodation as booked (shared room)
 - *Academic material
 - *Return airport transfer
- *Eco tax (Government Tax)
- *Orientation Tour
- *All registration fee
- *Welcome pack & drink
- *Emergency number in Malta

Package price: 4 weeks - Euro 1455

What included:

- *80 lessons over the period (GE 20)
- *Accommodation as booked (shared room)
 - *Academic material
 - *Return airport transfer
- *Eco tax (Government Tax)
- *Orientation Tour
- *All registration fee
- *Welcome pack & drink
- *Emergency number in Malta

Additional fees

GE Fluency Plus (26 lessons)
Supplement (+ 6 group lessons)
GE/IELTS/Cambridge Exam
Prep.* - Euro 65/week

* 6 lessons per week if 3+
students in the class; 4 lessons
per week if only 2 students in
the class; 2 lessons per week if
only 1 student in the class.

No lessons on Public
Holidays (no refund of
the loss lessons will
be made)

Single room supplement
(when available) – Euro
160 per week

Prime Language Courses' Bank details

Bank Transfer:

Name: Prime Language Courses LTD

Bank Name: BOV - Banca of Valletta p.l.c.

Bank address: 411, Fleur-de-lys Road, Birkirkara,
BKR9061

Malta Swift code: VALLMTMT

Account No.: 4002479164 - 3

IBAN: MT44 VALL 2201 3000 0000 4002 4791 643

***NON refundable deposit: Euro 500**

***Final payment 4 weeks before your arrival in Malta**

A photograph of a classroom or meeting room. In the center, a man in a light blue shirt and khaki pants is standing and gesturing with his right hand. To his left, another man in a light blue shirt is sitting on a desk, looking towards the standing man. In the foreground, several people are seated in blue chairs, facing away from the camera. On the right, a woman with blonde hair is sitting and pointing her right index finger upwards. The room has large windows in the background, a whiteboard, and a projector screen on the left. A large, semi-transparent red circular pattern is overlaid on the image, and the text "THANK YOU" is written in white, bold, sans-serif capital letters across the center.

THANK YOU